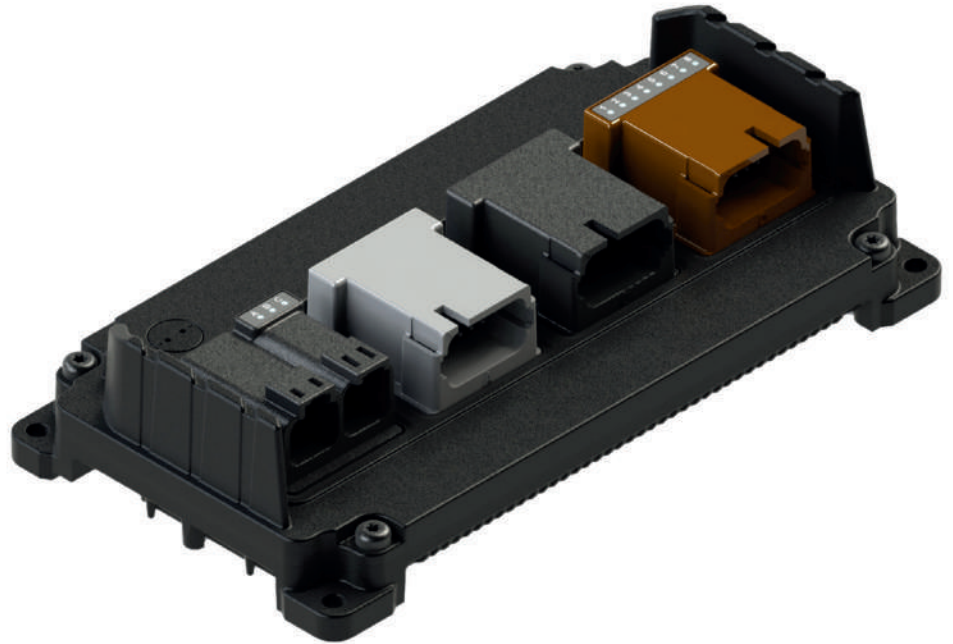


8 High Current Outputs with Individual LED Indicator Lights

Built to Perform in High Heat and High Vibration Areas

Features Universal Inputs and Flexible Proportional Outputs

Open/Short Protection and Overcurrent Protection



RUGGED HIGH-CURRENT CONTROLLER WITH FLEXIBLE I/O

Part of the complete uControl series of scalable mobile controllers, the MC4-21-14-H8 offers flexible I/O with high-current control for a variety of equipment needs and applications. Featuring multiple CAN interfaces, extensive inputs, 8 high-current outputs and 14 standard outputs, the MC4-21-14-H8 controller delivers extreme durability with precision control for any size job.

Simplify your equipment control using reliable, software selectable, universal outputs with feedback. The MC4-21-14-H8 controller works great with extended low voltage operation and also provides short circuit and overload protection. MC4-21-14-H8 controllers feature

a rugged IP69K-sealed aluminum enclosure with gel potting that allows it to be mounted where you need it, including high-heat and high-vibration areas like in engine compartments or on attachments.

FLEXIBLE PROGRAMMING OPTIONS



Advanced programming environment with support for structured text, ladder logic, and block diagrams.

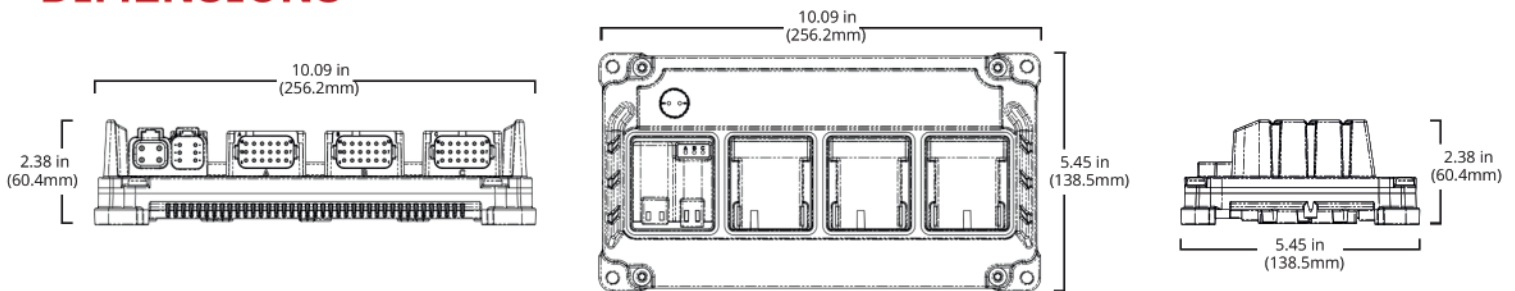
IP 69K **CE** **e-Mark** **ISO-13766**
REACH / RoHS

ENOVATIONCONTROLS.COM/MC4-21-14-H8

uControl™ MC4-21-14-H8

2010001 03-2022

DIMENSIONS



PRODUCT SPECIFICATIONS

21 INPUTS

UNIVERSAL ANALOG / HIGH	8
FREQUENCY UNIVERSAL ANALOG	13

22 OUTPUTS (SOFTWARE SELECTABLE)

4A PWM (FEEDBACK)	6
DUAL-RANGE PWM 4A / 0.5 A	8
(FEEDBACK) 15A PWM (FEEDBACK)	8

HARDWARE

CAN 2.0B /	3 Channels
J1939 SENSOR	(2) 400mA max @ 5 or 10 VDC [Software Selectable Voltage]
SUPPLY	J1A (4 pin) - DTP06-4S J1B (6 pin) - DT06-6S-E008
CONNECTORS	J2 (18 pin - A key) - DT16-18SA-K004 J3 (18 pin - B key) - DT16-18SB-K004 J4 (18 pin - D key) - DT16-18SD-K004
LED INDICATORS	(1) Green - Power Status (1) White - Software Configurable (1) Blue - Software Configurable (8) Green - High Current Status • Solid - Output Active • Dark - Output Inactive • Blinking - Output in Fault
DIMENSIONS	10.09 x 5.45 x 2.38 in (256.2 x 138.5 x 60.4 mm)

POWER SUPPLY

SUPPLY VOLTAGE	6-32 VDC, Nominal Operation @ 12 / 24 VDC
PEAK SUPPLY VOLTAGE	36 VDC
MAXIMUM CURRENT	100A
IDLE CURRENT 12/24 VDC	< 200mA @ 12VDC < 100mA @ 24VDC
STANDBY CURRENT 12/24 VDC	< 5mA @ 12VDC < 2.5mA @ 24VDC
SLEEP PIN	Control sleep and wake functionality

ENVIRONMENTAL

OPERATING TEMPERATURE	-40° to +221°F (-40° to +105°C)
STORAGE TEMPERATURE	-40° to +257°F (-40° to +125°C)
OPERATING ALTITUDE	0 - 4000 meters
PROTECTION	IP67, IP69K with Protective Boot
VIBRATION	5.82 Grms, 8 hours per axis
SHOCK	±50G, 6ms
HOUSING	Cast aluminum housing, soft-gel potted for extreme ruggedness and durability
EMC/EMI	2014/30/EU (CE / E-MARK), CISPR 11, CISPR 25, EN 60945, EN 61000-4-2, EN 61326-1, SAE J1113-2, SAE J1113-4, SAE J1113-11, SAE J1113-12, SAE J1113-13, SAE J1113-21, SAE J1113-22, SAE J1113-26, SAE J1455

⚠ **WARNING:** This product may expose you to chemicals which are known to the State of California to cause cancer. For more information, go to www.P65Warnings.ca.gov.

FOR MODEL & PART INFORMATION

FOR MANUAL & SUPPORT DOCUMENTS

FOR SUPPORT & WARRANTY

ENOVATIONCONTROLS.COM/MC4-21-14-H8

SUPPORT.ENOVATIONCONTROLS.COM

ENOVATIONCONTROLS.COM/SUPPORT

SALES CONTACT

ENOVATION
CONTROLS
A HELIOS COMPANY

CONTACT

✉ sales@rajkotmarinellc.ae

☎ +971 6 7487580

🌐 www.rajkotmarine.com

RAJKOT MARINE LLC

Jerf Industrial Area 1,
P.O Box 5861
Ajman, UAE

