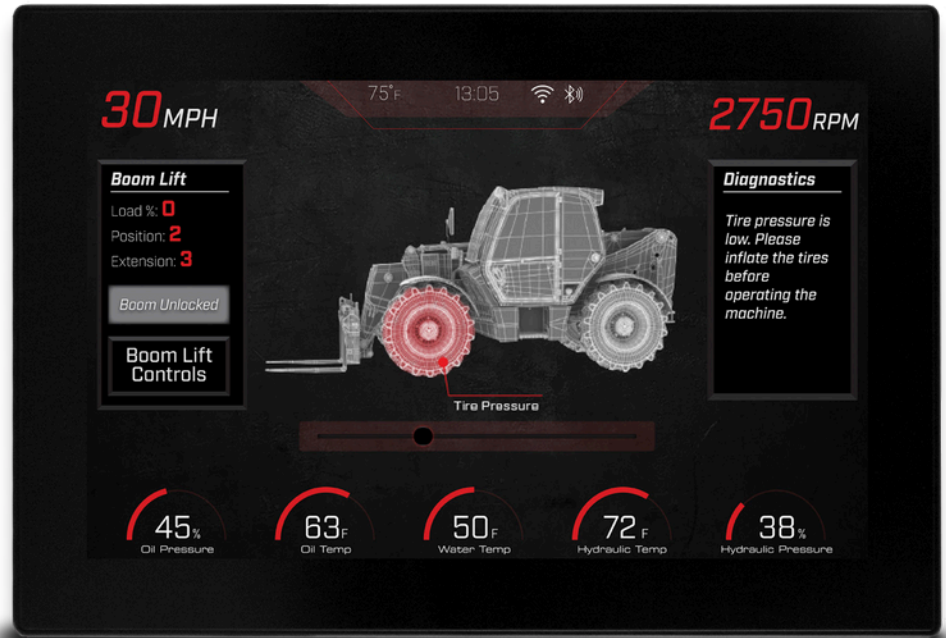


10.6-inch high-definition display for rich color graphics

Powerful processor for smooth animations and video playback

Glass display surface offers enhanced clarity and strength

Bonded glare-free LCD screen for superior visibility in sunlight



LARGE, FULL-COLOR DISPLAY BRINGS ENHANCED USER EXPERIENCE TO RUGGED APPLICATIONS

The PowerView 1100 is a full-color configurable display that integrates vital engine, transmission and diagnostic information into an easy-to-read operator interface. This large 10.6-inch high-definition display features expansive storage and a high-speed processor that boots quickly and can render high-quality graphics and animations.

The display's bonded LCD can easily be viewed in full sunlight, and its available glove-friendly touchscreen and rugged design make it a perfect solution for all types of

environments and applications.

The PV1100 is available in portrait or landscape options.

BUILT FOR POWERSVISION

PowerVision Configuration Studio® software lets programmers design stunning user interfaces, create intelligent applications with scripting and prototype quickly with a vast library of standard engine parameters.



IP
67

